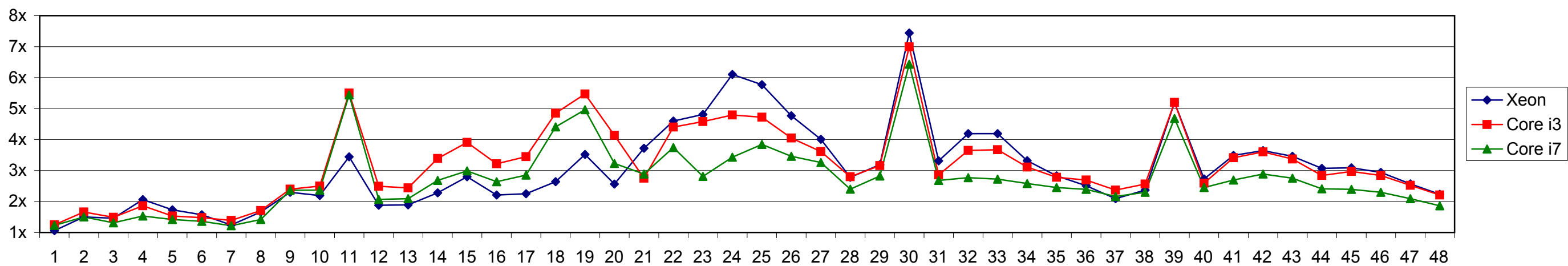
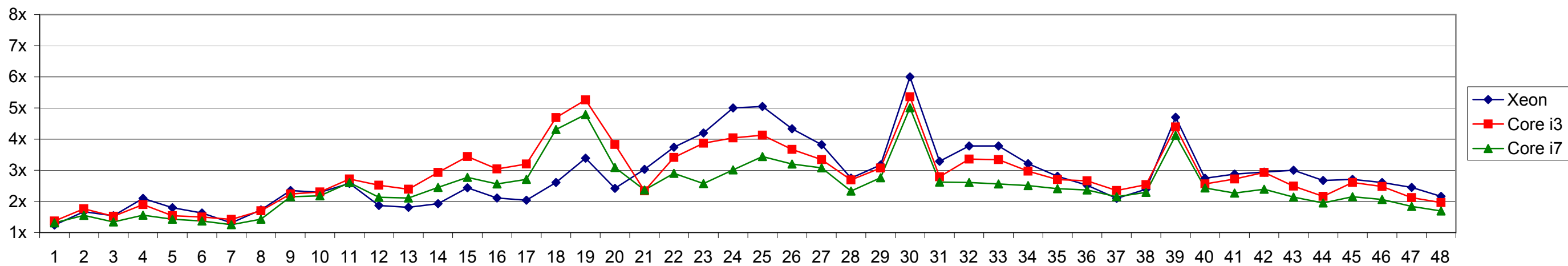


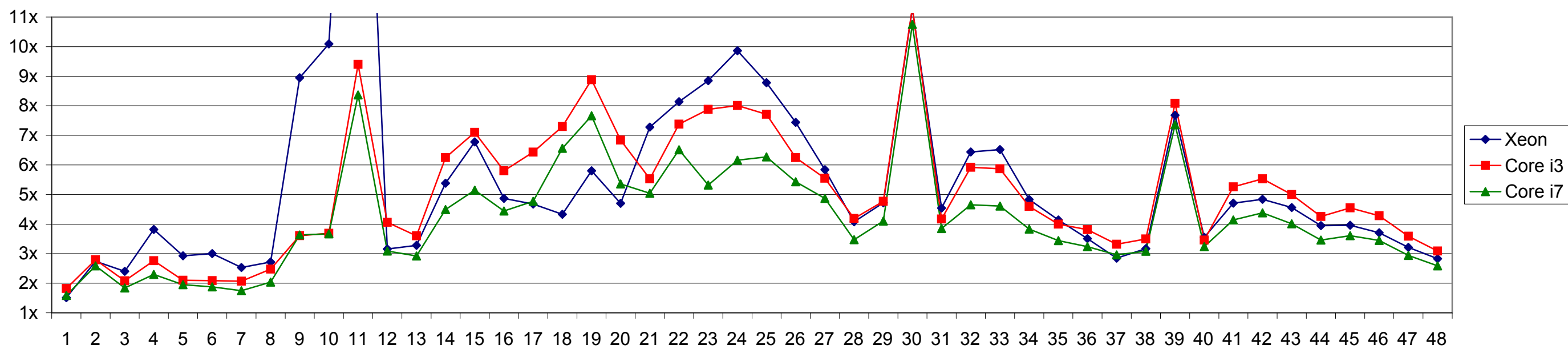
OBK vs BK: maxflow speedup (32-bit)



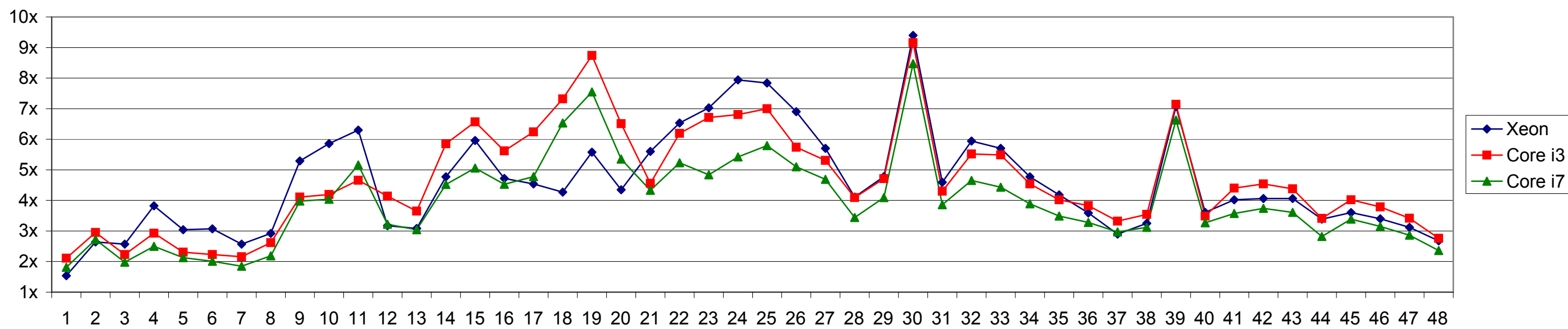
OBK vs BK: total speedup (32-bit)



OBK vs BK: maxflow speedup (64-bit)



OBK vs BK: total speedup (64-bit)



OBK vs BK (speedups)				Xeon				Core i3				Core i7				
				32-bit		64-bit		32-bit		64-bit		32-bit		64-bit		
				speedup maxflow	speedup total	speedup maxflow	speedup total	speedup maxflow	speedup total	speedup maxflow	speedup total	speedup maxflow	speedup total	speedup maxflow	speedup total	
instance	topo	# nodes	catype													
1	/mid/denoise/penguin	2D/4C	22k	16-bit	1.06	1.24	1.51	1.54	1.25	1.37	1.82	2.11	1.23	1.31	1.59	1.81
2	/mid/denoise/house	2D/4C	66k	32-bit	1.50	1.67	2.74	2.64	1.66	1.76	2.79	2.95	1.50	1.55	2.59	2.72
3	/mid/stereo/tsukuba	2D/4C	111k	8-bit	1.46	1.54	2.40	2.57	1.49	1.52	2.08	2.23	1.31	1.34	1.84	1.98
4	/uwo/stereo/BVZ-tsukuba	2D/4C	111k	8-bit	2.06	2.10	3.82	3.82	1.86	1.90	2.76	2.93	1.53	1.56	2.30	2.50
5	/uwo/stereo/BVZ-sawtooth	2D/4C	165k	8-bit	1.73	1.80	2.93	3.04	1.53	1.54	2.10	2.31	1.42	1.43	1.95	2.13
6	/uwo/stereo/BVZ-venus	2D/4C	166k	8-bit	1.57	1.63	3.00	3.07	1.48	1.50	2.09	2.23	1.36	1.37	1.88	2.01
7	/mid/stereo/venus	2D/4C	166k	16-bit	1.24	1.31	2.53	2.57	1.39	1.42	2.07	2.16	1.22	1.25	1.75	1.85
8	/mid/stereo/teddy	2D/4C	169k	8-bit	1.66	1.73	2.72	2.92	1.71	1.70	2.48	2.62	1.42	1.43	2.04	2.19
9	/mid/segment/flower	2D/4C	270k	16-bit	2.30	2.35	8.95	5.29	2.40	2.24	3.61	4.11	2.36	2.15	3.63	3.98
10	/mid/segment/person	2D/4C	270k	16-bit	2.19	2.29	10.09	5.86	2.50	2.30	3.69	4.19	2.37	2.18	3.67	4.04
11	/mid/segment/sponge	2D/4C	307k	16-bit	3.44	2.58	26.10	6.30	5.50	2.72	9.40	4.66	5.44	2.60	8.37	5.16
12	/mid/photomontage/family	2D/4C	426k	32-bit	1.88	1.87	3.16	3.17	2.49	2.52	4.06	4.14	2.07	2.13	3.09	3.22
13	/mid/photomontage/panorama	2D/4C	514k	32-bit	1.89	1.81	3.28	3.08	2.44	2.39	3.60	3.65	2.09	2.11	2.92	3.04
14	/ctu/lazybrush/footman	2D/4C	593k	16-bit	2.28	1.93	5.38	4.77	3.39	2.93	6.25	5.85	2.68	2.45	4.49	4.52
15	/ctu/lazybrush/hmdman	2D/4C	593k	16-bit	2.80	2.44	6.78	5.96	3.91	3.44	7.10	6.57	2.99	2.77	5.15	5.06
16	/ctu/lazybrush/mangadinner	2D/4C	593k	16-bit	2.21	2.11	4.87	4.72	3.22	3.04	5.80	5.62	2.64	2.56	4.44	4.53
17	/ctu/lazybrush/mangagirl	2D/4C	593k	16-bit	2.25	2.04	4.68	4.54	3.45	3.20	6.43	6.24	2.85	2.71	4.77	4.78
18	/ctu/lazybrush/elephant	2D/4C	2370k	16-bit	2.64	2.61	4.33	4.27	4.85	4.69	7.30	7.32	4.41	4.31	6.56	6.53
19	/ctu/lazybrush/bird	2D/4C	2372k	16-bit	3.52	3.39	5.80	5.58	5.47	5.26	8.88	8.74	4.96	4.79	7.66	7.55
20	/ctu/lazybrush/doctor	2D/4C	2373k	16-bit	2.56	2.42	4.70	4.35	4.14	3.83	6.84	6.51	3.23	3.09	5.36	5.35
21	/uwo/shapefit/LB07-bunny-sml	3D/6C	806k	8-bit	3.72	3.03	7.28	5.60	2.75	2.34	5.53	4.56	2.89	2.37	5.04	4.33
22	/uwo/shapefit/LB07-bunny-med	3D/6C	6311k	8-bit	4.60	3.74	8.14	6.53	4.40	3.41	7.38	6.19	3.74	2.90	6.51	5.23
23	/uwo/seg3d/bone/bone_subxyz_subxy.n6c10	3D/6C	246k	8-bit	4.81	4.20	8.85	7.03	4.58	3.87	7.88	6.71	2.81	2.57	5.32	4.84
24	/uwo/seg3d/bone/bone_subxyz_subx.n6c10	3D/6C	492k	8-bit	6.10	5.00	9.86	7.94	4.79	4.04	8.01	6.81	3.43	3.01	6.16	5.42
25	/uwo/seg3d/bone/bone_subxyz.n6c10	3D/6C	983k	8-bit	5.77	5.05	8.78	7.84	4.72	4.13	7.71	7.00	3.84	3.44	6.27	5.79
26	/uwo/seg3d/bone/bone_subxy.n6c10	3D/6C	1950k	8-bit	4.77	4.33	7.44	6.90	4.05	3.67	6.25	5.74	3.46	3.20	5.43	5.10
27	/uwo/seg3d/bone/bone_subx.n6c10	3D/6C	3899k	8-bit	4.01	3.82	5.84	5.70	3.61	3.34	5.55	5.31	3.26	3.08	4.87	4.69
28	/uwo/seg3d/liver/liver.n6c10	3D/6C	4162k	8-bit	2.78	2.75	4.08	4.11	2.80	2.69	4.19	4.09	2.40	2.33	3.47	3.44
29	/uwo/seg3d/babyface/babyface.n6c10	3D/6C	5063k	8-bit	3.19	3.17	4.72	4.78	3.16	3.07	4.77	4.71	2.82	2.76	4.10	4.09
30	/uwo/seg3d/bone/bone.n6c10	3D/6C	7799k	8-bit	7.44	6.00	11.28	9.40	6.99	5.36	11.31	9.16	6.43	5.01	10.75	8.47
31	/uwo/seg3d/adhead/adhead.n6c10	3D/6C	12583k	8-bit	3.31	3.29	4.54	4.59	2.86	2.79	4.17	4.30	2.68	2.62	3.85	3.86
32	/uwo/seg3d/bone/bone_subxyz_subxy.n6c100	3D/6C	246k	8-bit	4.19	3.78	6.44	5.94	3.65	3.36	5.92	5.52	2.77	2.61	4.65	4.65
33	/uwo/seg3d/bone/bone_subxyz_subx.n6c100	3D/6C	492k	8-bit	4.19	3.78	6.52	5.70	3.67	3.34	5.87	5.49	2.72	2.56	4.61	4.43
34	/uwo/seg3d/bone/bone_subxyz.n6c100	3D/6C	983k	8-bit	3.32	3.21	4.83	4.77	3.11	2.97	4.60	4.54	2.58	2.51	3.83	3.89
35	/uwo/seg3d/bone/bone_subxy.n6c100	3D/6C	1950k	8-bit	2.83	2.81	4.14	4.18	2.78	2.70	4.00	4.02	2.45	2.41	3.44	3.49
36	/uwo/seg3d/bone/bone_subx.n6c100	3D/6C	3899k	8-bit	2.51	2.52	3.51	3.59	2.69	2.66	3.81	3.83	2.39	2.37	3.24	3.28
37	/uwo/seg3d/liver/liver.n6c100	3D/6C	4162k	8-bit	2.09	2.10	2.85	2.90	2.37	2.35	3.32	3.32	2.16	2.15	2.96	2.97
38	/uwo/seg3d/babyface/babyface.n6c100	3D/6C	5063k	8-bit	2.37	2.39	3.17	3.25	2.56	2.54	3.50	3.54	2.30	2.29	3.08	3.12
39	/uwo/seg3d/bone/bone.n6c100	3D/6C	7799k	8-bit	5.20	4.70	7.68	7.07	5.20	4.39	8.08	7.14	4.68	4.12	7.36	6.63
40	/uwo/seg3d/adhead/adhead.n6c100	3D/6C	12583k	8-bit	2.73	2.74	3.55	3.61	2.59	2.56	3.46	3.49	2.45	2.43	3.24	3.27
41	/uwo/seg3d/bone/bone_subxyz_subxy.n26c10	3D/26C	246k	8-bit	3.49	2.88	4.71	4.02	3.41	2.72	5.26	4.40	2.69	2.27	4.14	3.57
42	/uwo/seg3d/bone/bone_subxyz_subx.n26c10	3D/26C	492k	8-bit	3.64	2.94	4.84	4.06	3.60	2.93	5.53	4.54	2.89	2.39	4.38	3.74
43	/uwo/seg3d/bone/bone_subxyz.n26c10	3D/26C	983k	8-bit	3.46	3.00	4.56	4.06	3.37	2.49	5.00	4.38	2.75	2.14	4.01	3.61
44	/uwo/seg3d/bone/bone_subxy.n26c10	3D/26C	1950k	8-bit	3.07	2.67	3.95	3.39	2.84	2.16	4.26	3.41	2.41	1.95	3.46	2.82
45	/uwo/seg3d/bone/bone_subxyz_subxy.n26c100	3D/26C	246k	8-bit	3.09	2.71	3.96	3.60	2.97	2.61	4.55	4.02	2.39	2.15	3.61	3.39
46	/uwo/seg3d/bone/bone_subxyz_subx.n26c100	3D/26C	492k	8-bit	2.94	2.61	3.71	3.40	2.84	2.48	4.28	3.79	2.30	2.06	3.45	3.15
47	/uwo/seg3d/bone/bone_subxyz.n26c100	3D/26C	983k	8-bit	2.57	2.45	3.21	3.12	2.52	2.12	3.59	3.42	2.09	1.84	2.94	2.86
48	/uwo/seg3d/bone/bone_subxy.n26c100	3D/26C	1950k	8-bit	2.23	2.16	2.83	2.68	2.21	1.96	3.09	2.76	1.86	1.69	2.59	2.36
average:					3.06	2.81	5.52	4.58	3.19	2.84	5.04	4.65	2.72	2.47	4.23	3.99

OBK vs BK (Core i3, 32-bit)				BK				OBK						
				time init	time maxflow	time output	time total	time init	time maxflow	time output	time total	speedup maxflow	speedup total	
	instance	topo	# nodes	captype										
1	/mid/denoise/penguin	2D/4C	22k	16-bit	310	1018	57	1385	184	811	18	1013	1.25	1.37
2	/mid/denoise/house	2D/4C	66k	32-bit	1134	4412	205	5751	555	2657	52	3264	1.66	1.76
3	/mid/stereo/tsukuba	2D/4C	111k	8-bit	96	639	20	754	62	429	5	496	1.49	1.52
4	/uwo/stereo/BVZ-tsukuba	2D/4C	111k	8-bit	115	433	20	568	62	233	5	300	1.86	1.90
5	/uwo/stereo/BVZ-sawtooth	2D/4C	165k	8-bit	181	765	38	984	130	499	10	639	1.53	1.54
6	/uwo/stereo/BVZ-venus	2D/4C	166k	8-bit	202	1377	42	1621	142	931	11	1084	1.48	1.50
7	/mid/stereo/venus	2D/4C	166k	16-bit	188	2048	40	2276	123	1472	9	1605	1.39	1.42
8	/mid/stereo/teddy	2D/4C	169k	8-bit	526	4153	122	4801	355	2432	30	2817	1.71	1.70
9	/mid/segment/flower	2D/4C	270k	16-bit	39	35	8	82	20	14	2	36	2.40	2.24
10	/mid/segment/person	2D/4C	270k	16-bit	39	37	8	83	19	15	2	36	2.50	2.30
11	/mid/segment/sponge	2D/4C	307k	16-bit	44	27	10	81	22	5	3	30	5.50	2.72
12	/mid/photomontage/family	2D/4C	426k	32-bit	509	7028	103	7639	181	2828	26	3034	2.49	2.52
13	/mid/photomontage/panorama	2D/4C	514k	32-bit	679	3867	137	4683	341	1586	33	1960	2.44	2.39
14	/ctu/lazybrush/footman	2D/4C	593k	16-bit	75	340	18	433	38	100	9	148	3.39	2.93
15	/ctu/lazybrush/hmdman	2D/4C	593k	16-bit	78	506	17	601	37	129	9	175	3.91	3.44
16	/ctu/lazybrush/mangadinner	2D/4C	593k	16-bit	186	915	38	1139	74	285	16	375	3.22	3.04
17	/ctu/lazybrush/mangagirl	2D/4C	593k	16-bit	71	678	17	766	34	197	8	239	3.45	3.20
18	/ctu/lazybrush/elephant	2D/4C	2370k	16-bit	206	7425	44	7675	88	1530	18	1636	4.85	4.69
19	/ctu/lazybrush/bird	2D/4C	2372k	16-bit	208	6937	44	7189	81	1269	17	1366	5.47	5.26
20	/ctu/lazybrush/doctor	2D/4C	2373k	16-bit	244	3281	59	3584	117	792	29	937	4.14	3.83
21	/uwo/shapefit/LB07-bunny-sml	3D/6C	806k	8-bit	85	252	13	350	51	92	7	150	2.75	2.34
22	/uwo/shapefit/LB07-bunny-med	3D/6C	6311k	8-bit	653	1678	93	2424	294	382	35	711	4.40	3.41
23	/uwo/seg3d/bone/bone_subxyz_subxy.n6c10	3D/6C	246k	8-bit	19	112	4	135	9	24	2	35	4.58	3.87
24	/uwo/seg3d/bone/bone_subxyz_subx.n6c10	3D/6C	492k	8-bit	39	249	7	295	18	52	3	73	4.79	4.04
25	/uwo/seg3d/bone/bone_subxyz.n6c10	3D/6C	983k	8-bit	80	755	14	849	40	160	6	205	4.72	4.13
26	/uwo/seg3d/bone/bone_subxy.n6c10	3D/6C	1950k	8-bit	160	1488	29	1677	78	367	12	457	4.05	3.67
27	/uwo/seg3d/bone/bone_subx.n6c10	3D/6C	3899k	8-bit	324	3651	61	4036	178	1010	22	1210	3.61	3.34
28	/uwo/seg3d/liver/liver.n6c10	3D/6C	4162k	8-bit	351	6865	62	7278	228	2452	24	2704	2.80	2.69
29	/uwo/seg3d/babyface/babyface.n6c10	3D/6C	5063k	8-bit	445	6539	77	7062	208	2067	27	2302	3.16	3.07
30	/uwo/seg3d/bone/bone.n6c10	3D/6C	7799k	8-bit	759	5490	129	6378	361	786	42	1189	6.99	5.36
31	/uwo/seg3d/adhead/adhead.n6c10	3D/6C	12583k	8-bit	1213	14519	236	15968	558	5084	71	5713	2.86	2.79
32	/uwo/seg3d/bone/bone_subxyz_subxy.n6c100	3D/6C	246k	8-bit	40	280	7	327	18	77	3	98	3.65	3.36
33	/uwo/seg3d/bone/bone_subxyz_subx.n6c100	3D/6C	492k	8-bit	40	281	8	329	19	77	3	99	3.67	3.34
34	/uwo/seg3d/bone/bone_subxyz.n6c100	3D/6C	983k	8-bit	81	919	15	1015	40	296	6	341	3.11	2.97
35	/uwo/seg3d/bone/bone_subxy.n6c100	3D/6C	1950k	8-bit	163	2168	30	2361	81	781	12	874	2.78	2.70
36	/uwo/seg3d/bone/bone_subx.n6c100	3D/6C	3899k	8-bit	332	6123	59	6514	154	2278	22	2453	2.69	2.66
37	/uwo/seg3d/liver/liver.n6c100	3D/6C	4162k	8-bit	355	14511	66	14932	227	6115	24	6367	2.37	2.35
38	/uwo/seg3d/babyface/babyface.n6c100	3D/6C	5063k	8-bit	426	11703	76	12206	203	4571	27	4802	2.56	2.54
39	/uwo/seg3d/bone/bone.n6c100	3D/6C	7799k	8-bit	677	6827	129	7633	380	1314	43	1737	5.20	4.39
40	/uwo/seg3d/adhead/adhead.n6c100	3D/6C	12583k	8-bit	1173	30293	219	31686	588	11701	73	12362	2.59	2.56
41	/uwo/seg3d/bone/bone_subxyz_subxy.n26c10	3D/26C	246k	8-bit	75	421	11	507	60	124	2	186	3.41	2.72
42	/uwo/seg3d/bone/bone_subxyz_subx.n26c10	3D/26C	492k	8-bit	161	861	21	1043	113	239	4	356	3.60	2.93
43	/uwo/seg3d/bone/bone_subxyz.n26c10	3D/26C	983k	8-bit	468	2385	45	2898	447	708	9	1164	3.37	2.49
44	/uwo/seg3d/bone/bone_subxy.n26c10	3D/26C	1950k	8-bit	756	4751	90	5598	904	1675	16	2595	2.84	2.16
45	/uwo/seg3d/bone/bone_subxyz_subxy.n26c100	3D/26C	246k	8-bit	77	469	11	557	52	158	3	214	2.97	2.61
46	/uwo/seg3d/bone/bone_subxyz_subx.n26c100	3D/26C	492k	8-bit	159	918	21	1097	115	323	4	442	2.84	2.48
47	/uwo/seg3d/bone/bone_subxyz.n26c100	3D/26C	983k	8-bit	472	3085	41	3598	464	1226	8	1698	2.52	2.12
48	/uwo/seg3d/bone/bone_subxy.n26c100	3D/26C	1950k	8-bit	787	5911	90	6788	781	2672	17	3469	2.21	1.96

OBK vs BK (Core i3, 64-bit)				BK				OBK					
				time init	time maxflow	time output	time total	time init	time maxflow	time output	time total	speedup maxflow	speedup total
instance	topo	# nodes	captype										
1 /mid/denoise/penguin	2D/4C	22k	16-bit	455	1188	85	1729	154	653	15	821	1.82	2.11
2 /mid/denoise/house	2D/4C	66k	32-bit	1462	5875	340	7677	453	2110	43	2606	2.79	2.95
3 /mid/stereo/tsukuba	2D/4C	111k	8-bit	137	752	34	922	48	362	4	415	2.08	2.23
4 /uwo/stereo/BVZ-tsukuba	2D/4C	111k	8-bit	146	555	36	737	46	201	5	251	2.76	2.93
5 /uwo/stereo/BVZ-sawtooth	2D/4C	165k	8-bit	273	902	68	1243	101	430	8	539	2.10	2.31
6 /uwo/stereo/BVZ-venus	2D/4C	166k	8-bit	303	1654	75	2031	112	790	9	911	2.09	2.23
7 /mid/stereo/venus	2D/4C	166k	16-bit	266	2477	65	2808	98	1195	8	1301	2.07	2.16
8 /mid/stereo/teddy	2D/4C	169k	8-bit	838	5143	204	6186	256	2076	26	2357	2.48	2.62
9 /mid/segment/flower	2D/4C	270k	16-bit	53	42	13	108	13	12	2	26	3.61	4.11
0 /mid/segment/person	2D/4C	270k	16-bit	53	43	13	109	12	12	2	26	3.69	4.19
1 /mid/segment/sponge	2D/4C	307k	16-bit	63	40	16	118	19	4	2	25	9.40	4.66
2 /mid/photomontage/family	2D/4C	426k	32-bit	720	9630	170	10520	149	2371	22	2542	4.06	4.14
3 /mid/photomontage/panorama	2D/4C	514k	32-bit	940	4815	217	5971	273	1337	28	1638	3.60	3.65
4 /ctu/lazybrush/footman	2D/4C	593k	16-bit	116	502	24	642	22	80	8	110	6.25	5.85
5 /ctu/lazybrush/hmdman	2D/4C	593k	16-bit	113	748	24	886	22	105	7	135	7.10	6.57
6 /ctu/lazybrush/mangadinner	2D/4C	593k	16-bit	239	1315	53	1607	48	227	12	286	5.80	5.62
7 /ctu/lazybrush/mangagirl	2D/4C	593k	16-bit	121	1004	23	1148	20	156	7	184	6.43	6.24
8 /ctu/lazybrush/elephant	2D/4C	2370k	16-bit	388	9483	69	9940	46	1299	14	1359	7.30	7.32
9 /ctu/lazybrush/bird	2D/4C	2372k	16-bit	310	9005	69	9383	47	1014	13	1074	8.88	8.74
0 /ctu/lazybrush/doctor	2D/4C	2373k	16-bit	355	4234	83	4673	78	619	20	717	6.84	6.51
1 /uwo/shapefit/LB07-bunny-sml	3D/6C	806k	8-bit	98	276	20	394	32	50	5	86	5.53	4.56
2 /uwo/shapefit/LB07-bunny-med	3D/6C	6311k	8-bit	1028	2447	157	3632	225	332	30	587	7.38	6.19
3 /uwo/seg3d/bone/bone_subxyz_subxy.n6c10	3D/6C	246k	8-bit	29	162	6	197	8	21	1	29	7.88	6.71
4 /uwo/seg3d/bone/bone_subxyz_subx.n6c10	3D/6C	492k	8-bit	59	346	12	417	15	43	3	61	8.01	6.81
5 /uwo/seg3d/bone/bone_subxyz.n6c10	3D/6C	983k	8-bit	128	1066	25	1219	31	138	5	174	7.71	7.00
6 /uwo/seg3d/bone/bone_subxy.n6c10	3D/6C	1950k	8-bit	240	2031	49	2320	69	325	10	404	6.25	5.74
7 /uwo/seg3d/bone/bone_subx.n6c10	3D/6C	3899k	8-bit	485	4933	100	5518	132	889	19	1040	5.55	5.31
8 /uwo/seg3d/liver/liver.n6c10	3D/6C	4162k	8-bit	515	9107	107	9729	183	2172	21	2376	4.19	4.09
9 /uwo/seg3d/babyface/babyface.n6c10	3D/6C	5063k	8-bit	622	8759	129	9510	162	1835	23	2020	4.77	4.71
0 /uwo/seg3d/bone/bone.n6c10	3D/6C	7799k	8-bit	1103	7647	199	8949	261	676	40	977	11.31	9.16
1 /uwo/seg3d/adhead/adhead.n6c10	3D/6C	12583k	8-bit	2259	19084	391	21735	416	4577	62	5055	4.17	4.30
2 /uwo/seg3d/bone/bone_subxyz_subxy.n6c100	3D/6C	246k	8-bit	60	395	13	467	15	67	3	85	5.92	5.52
3 /uwo/seg3d/bone/bone_subxyz_subx.n6c100	3D/6C	492k	8-bit	60	391	13	464	15	67	3	85	5.87	5.49
4 /uwo/seg3d/bone/bone_subxyz.n6c100	3D/6C	983k	8-bit	123	1217	25	1365	31	264	5	301	4.60	4.54
5 /uwo/seg3d/bone/bone_subxy.n6c100	3D/6C	1950k	8-bit	250	2860	51	3161	62	715	10	787	4.00	4.02
6 /uwo/seg3d/bone/bone_subx.n6c100	3D/6C	3899k	8-bit	493	7833	100	8426	127	2057	19	2203	3.81	3.83
7 /uwo/seg3d/liver/liver.n6c100	3D/6C	4162k	8-bit	522	18706	110	19338	177	5627	21	5825	3.32	3.32
8 /uwo/seg3d/babyface/babyface.n6c100	3D/6C	5063k	8-bit	638	14906	131	15676	150	4254	23	4428	3.50	3.54
9 /uwo/seg3d/bone/bone.n6c100	3D/6C	7799k	8-bit	982	9380	211	10573	285	1161	36	1481	8.08	7.14
0 /uwo/seg3d/adhead/adhead.n6c100	3D/6C	12583k	8-bit	1861	37496	502	39859	524	10835	64	11423	3.46	3.49
1 /uwo/seg3d/bone/bone_subxyz_subxy.n26c10	3D/26C	246k	8-bit	113	609	19	742	51	116	2	168	5.26	4.40
2 /uwo/seg3d/bone/bone_subxyz_subx.n26c10	3D/26C	492k	8-bit	236	1237	39	1512	106	224	4	333	5.53	4.54
3 /uwo/seg3d/bone/bone_subxyz.n26c10	3D/26C	983k	8-bit	496	3323	78	3898	218	664	7	890	5.00	4.38
4 /uwo/seg3d/bone/bone_subxy.n26c10	3D/26C	1950k	8-bit	1166	6547	154	7867	759	1537	14	2310	4.26	3.41
5 /uwo/seg3d/bone/bone_subxyz_subxy.n26c100	3D/26C	246k	8-bit	115	669	19	803	50	147	2	200	4.55	4.02
6 /uwo/seg3d/bone/bone_subxyz_subx.n26c100	3D/26C	492k	8-bit	232	1293	38	1563	107	302	4	413	4.28	3.79
7 /uwo/seg3d/bone/bone_subxyz.n26c100	3D/26C	983k	8-bit	481	4118	76	4675	213	1148	7	1368	3.59	3.42
8 /uwo/seg3d/bone/bone_subxy.n26c100	3D/26C	1950k	8-bit	1147	7768	153	9067	760	2517	14	3291	3.09	2.76

OBK vs BK (Core i7, 32-bit)				BK				OBK						
				time init	time maxflow	time output	time total	time init	time maxflow	time output	time total	speedup maxflow	speedup total	
	instance	topo	# nodes	captype										
1	/mid/denoise/penguin	2D/4C	22k	16-bit	199	738	34	971	131	599	13	743	1.23	1.31
2	/mid/denoise/house	2D/4C	66k	32-bit	626	2865	117	3608	388	1906	38	2332	1.50	1.55
3	/mid/stereo/tsukuba	2D/4C	111k	8-bit	61	411	12	484	45	314	4	362	1.31	1.34
4	/uwo/stereo/BVZ-tsukuba	2D/4C	111k	8-bit	65	260	13	338	43	170	4	217	1.53	1.56
5	/uwo/stereo/BVZ-sawtooth	2D/4C	165k	8-bit	119	508	25	652	93	357	7	457	1.42	1.43
6	/uwo/stereo/BVZ-venus	2D/4C	166k	8-bit	131	913	28	1071	104	669	8	781	1.36	1.37
7	/mid/stereo/venus	2D/4C	166k	16-bit	122	1288	26	1436	90	1054	7	1151	1.22	1.25
8	/mid/stereo/teddy	2D/4C	169k	8-bit	339	2512	78	2928	258	1764	22	2044	1.42	1.43
9	/mid/segment/flower	2D/4C	270k	16-bit	26	24	6	56	14	10	2	26	2.36	2.15
10	/mid/segment/person	2D/4C	270k	16-bit	26	25	6	57	14	11	2	26	2.37	2.18
11	/mid/segment/sponge	2D/4C	307k	16-bit	30	19	6	55	16	3	2	21	5.44	2.60
12	/mid/photomontage/family	2D/4C	426k	32-bit	346	4112	77	4536	125	1987	18	2130	2.07	2.13
13	/mid/photomontage/panorama	2D/4C	514k	32-bit	466	2374	99	2940	233	1138	24	1394	2.09	2.11
14	/ctu/lazybrush/footman	2D/4C	593k	16-bit	52	190	12	254	26	71	7	104	2.68	2.45
15	/ctu/lazybrush/hmdman	2D/4C	593k	16-bit	54	267	12	333	25	89	6	120	2.99	2.77
16	/ctu/lazybrush/mangadinner	2D/4C	593k	16-bit	120	522	26	668	52	197	12	261	2.64	2.56
17	/ctu/lazybrush/mangagirl	2D/4C	593k	16-bit	49	394	11	455	23	138	6	168	2.85	2.71
18	/ctu/lazybrush/elephant	2D/4C	2370k	16-bit	144	4821	32	4997	55	1093	12	1160	4.41	4.31
19	/ctu/lazybrush/bird	2D/4C	2372k	16-bit	145	4380	32	4557	55	883	12	951	4.96	4.79
20	/ctu/lazybrush/doctor	2D/4C	2373k	16-bit	160	1691	38	1889	71	524	17	612	3.23	3.09
21	/uwo/shapefit/LB07-bunny-sml	3D/6C	806k	8-bit	41	118	8	167	27	41	3	71	2.89	2.37
22	/uwo/shapefit/LB07-bunny-med	3D/6C	6311k	8-bit	324	1008	63	1396	186	270	26	481	3.74	2.90
23	/uwo/seg3d/bone/bone_subxyz_subxy.n6c10	3D/6C	246k	8-bit	13	50	3	66	7	18	1	26	2.81	2.57
24	/uwo/seg3d/bone/bone_subxyz_subx.n6c10	3D/6C	492k	8-bit	26	129	5	161	13	38	2	53	3.43	3.01
25	/uwo/seg3d/bone/bone_subxyz.n6c10	3D/6C	983k	8-bit	53	436	11	500	28	114	4	145	3.84	3.44
26	/uwo/seg3d/bone/bone_subxy.n6c10	3D/6C	1950k	8-bit	106	903	21	1030	53	261	8	322	3.46	3.20
27	/uwo/seg3d/bone/bone_subx.n6c10	3D/6C	3899k	8-bit	212	2228	41	2481	105	684	16	805	3.26	3.08
28	/uwo/seg3d/liver/liver.n6c10	3D/6C	4162k	8-bit	225	3993	45	4263	148	1662	18	1827	2.40	2.33
29	/uwo/seg3d/babyface/babyface.n6c10	3D/6C	5063k	8-bit	283	3848	54	4185	136	1362	20	1519	2.82	2.76
30	/uwo/seg3d/bone/bone.n6c10	3D/6C	7799k	8-bit	444	3344	83	3871	222	520	31	772	6.43	5.01
31	/uwo/seg3d/adhead/adhead.n6c10	3D/6C	12583k	8-bit	706	8650	135	9492	342	3233	51	3627	2.68	2.62
32	/uwo/seg3d/bone/bone_subxyz_subxy.n6c100	3D/6C	246k	8-bit	27	156	5	188	13	56	2	72	2.77	2.61
33	/uwo/seg3d/bone/bone_subxyz_subx.n6c100	3D/6C	492k	8-bit	27	153	5	185	14	56	2	72	2.72	2.56
34	/uwo/seg3d/bone/bone_subxyz.n6c100	3D/6C	983k	8-bit	54	550	11	615	27	213	4	245	2.58	2.51
35	/uwo/seg3d/bone/bone_subxy.n6c100	3D/6C	1950k	8-bit	106	1335	21	1462	53	545	8	606	2.45	2.41
36	/uwo/seg3d/bone/bone_subx.n6c100	3D/6C	3899k	8-bit	211	3810	42	4063	105	1591	16	1712	2.39	2.37
37	/uwo/seg3d/liver/liver.n6c100	3D/6C	4162k	8-bit	225	9126	45	9397	139	4217	18	4374	2.16	2.15
38	/uwo/seg3d/babyface/babyface.n6c100	3D/6C	5063k	8-bit	284	7305	55	7644	132	3179	20	3331	2.30	2.29
39	/uwo/seg3d/bone/bone.n6c100	3D/6C	7799k	8-bit	446	4189	83	4718	219	896	31	1146	4.68	4.12
40	/uwo/seg3d/adhead/adhead.n6c100	3D/6C	12583k	8-bit	709	19066	136	19912	336	7795	52	8184	2.45	2.43
41	/uwo/seg3d/bone/bone_subxyz_subxy.n26c10	3D/26C	246k	8-bit	51	241	7	299	41	90	2	132	2.69	2.27
42	/uwo/seg3d/bone/bone_subxyz_subx.n26c10	3D/26C	492k	8-bit	104	496	14	614	83	172	3	257	2.89	2.39
43	/uwo/seg3d/bone/bone_subxyz.n26c10	3D/26C	983k	8-bit	315	1370	29	1714	297	499	6	802	2.75	2.14
44	/uwo/seg3d/bone/bone_subxy.n26c10	3D/26C	1950k	8-bit	544	2764	57	3365	566	1147	11	1724	2.41	1.95
45	/uwo/seg3d/bone/bone_subxyz_subxy.n26c100	3D/26C	246k	8-bit	51	276	7	335	39	116	2	156	2.39	2.15
46	/uwo/seg3d/bone/bone_subxyz_subx.n26c100	3D/26C	492k	8-bit	103	539	15	657	82	234	3	319	2.30	2.06
47	/uwo/seg3d/bone/bone_subxyz.n26c100	3D/26C	983k	8-bit	314	1840	29	2183	297	882	6	1185	2.09	1.84
48	/uwo/seg3d/bone/bone_subxy.n26c100	3D/26C	1950k	8-bit	547	3537	58	4141	540	1898	12	2450	1.86	1.69

OBK vs BK (Core i7, 64-bit)				BK				OBK						
				time init	time maxflow	time output	time total	time init	time maxflow	time output	time total	speedup maxflow	speedup total	
	instance	topo	# nodes	captype										
1	/mid/denoise/penguin	2D/4C	22k	16-bit	277	771	43	1091	106	486	11	604	1.59	1.81
2	/mid/denoise/house	2D/4C	66k	32-bit	927	3952	214	5093	317	1524	32	1873	2.59	2.72
3	/mid/stereo/tsukuba	2D/4C	111k	8-bit	91	492	22	605	35	267	3	305	1.84	1.98
4	/uwo/stereo/BVZ-tsukuba	2D/4C	111k	8-bit	98	334	24	455	33	145	3	182	2.30	2.50
5	/uwo/stereo/BVZ-sawtooth	2D/4C	165k	8-bit	180	599	44	823	72	307	6	386	1.95	2.13
6	/uwo/stereo/BVZ-venus	2D/4C	166k	8-bit	206	1073	50	1329	81	572	7	660	1.88	2.01
7	/mid/stereo/venus	2D/4C	166k	16-bit	176	1505	44	1726	70	858	6	934	1.75	1.85
8	/mid/stereo/teddy	2D/4C	169k	8-bit	548	3103	138	3789	186	1522	19	1727	2.04	2.19
9	/mid/segment/flower	2D/4C	270k	16-bit	36	30	9	74	9	8	1	19	3.63	3.98
10	/mid/segment/person	2D/4C	270k	16-bit	36	31	9	76	9	9	1	19	3.67	4.04
11	/mid/segment/sponge	2D/4C	307k	16-bit	41	24	10	75	10	3	2	15	8.37	5.16
12	/mid/photomontage/family	2D/4C	426k	32-bit	474	5178	113	5764	99	1677	16	1791	3.09	3.22
13	/mid/photomontage/panorama	2D/4C	514k	32-bit	626	2829	148	3603	195	969	21	1185	2.92	3.04
14	/ctu/lazybrush/footman	2D/4C	593k	16-bit	80	255	16	351	15	57	6	78	4.49	4.52
15	/ctu/lazybrush/hmdman	2D/4C	593k	16-bit	78	372	16	466	15	72	5	92	5.15	5.06
16	/ctu/lazybrush/mangadinner	2D/4C	593k	16-bit	165	710	36	911	33	160	8	201	4.44	4.53
17	/ctu/lazybrush/mangagirl	2D/4C	593k	16-bit	75	532	15	622	14	112	5	130	4.77	4.78
18	/ctu/lazybrush/elephant	2D/4C	2370k	16-bit	203	6005	45	6253	33	915	10	958	6.56	6.53
19	/ctu/lazybrush/bird	2D/4C	2372k	16-bit	205	5589	45	5840	34	729	10	773	7.66	7.55
20	/ctu/lazybrush/doctor	2D/4C	2373k	16-bit	240	2294	52	2586	41	428	15	484	5.36	5.35
21	/uwo/shapefit/LB07-bunny-sml	3D/6C	806k	8-bit	65	167	13	244	20	33	3	56	5.04	4.33
22	/uwo/shapefit/LB07-bunny-med	3D/6C	6311k	8-bit	528	1429	105	2062	153	220	22	394	6.51	5.23
23	/uwo/seg3d/bone/bone_subxyz_subxy.n6c10	3D/6C	246k	8-bit	20	80	4	104	6	15	1	22	5.32	4.84
24	/uwo/seg3d/bone/bone_subxyz_subx.n6c10	3D/6C	492k	8-bit	40	195	8	244	11	32	2	45	6.16	5.42
25	/uwo/seg3d/bone/bone_subxyz.n6c10	3D/6C	983k	8-bit	80	603	17	700	21	96	4	121	6.27	5.79
26	/uwo/seg3d/bone/bone_subxy.n6c10	3D/6C	1950k	8-bit	157	1187	32	1375	44	219	7	270	5.43	5.10
27	/uwo/seg3d/bone/bone_subx.n6c10	3D/6C	3899k	8-bit	327	2911	63	3301	93	598	14	704	4.87	4.69
28	/uwo/seg3d/liver/liver.n6c10	3D/6C	4162k	8-bit	348	5247	71	5665	122	1510	15	1647	3.47	3.44
29	/uwo/seg3d/babyface/babyface.n6c10	3D/6C	5063k	8-bit	437	5295	84	5816	113	1292	17	1421	4.10	4.09
30	/uwo/seg3d/bone/bone.n6c10	3D/6C	7799k	8-bit	685	4584	132	5401	185	427	26	638	10.75	8.47
31	/uwo/seg3d/adhead/adhead.n6c10	3D/6C	12583k	8-bit	1063	11159	218	12440	284	2897	44	3225	3.85	3.86
32	/uwo/seg3d/bone/bone_subxyz_subxy.n6c100	3D/6C	246k	8-bit	53	230	8	291	11	49	2	63	4.65	4.65
33	/uwo/seg3d/bone/bone_subxyz_subx.n6c100	3D/6C	492k	8-bit	41	224	9	274	11	49	2	62	4.61	4.43
34	/uwo/seg3d/bone/bone_subxyz.n6c100	3D/6C	983k	8-bit	90	726	17	832	21	189	4	214	3.83	3.89
35	/uwo/seg3d/bone/bone_subxy.n6c100	3D/6C	1950k	8-bit	167	1697	33	1897	44	493	7	544	3.44	3.49
36	/uwo/seg3d/bone/bone_subx.n6c100	3D/6C	3899k	8-bit	338	4790	67	5195	93	1478	14	1585	3.24	3.28
37	/uwo/seg3d/liver/liver.n6c100	3D/6C	4162k	8-bit	358	11473	71	11902	115	3882	15	4012	2.96	2.97
38	/uwo/seg3d/babyface/babyface.n6c100	3D/6C	5063k	8-bit	438	9045	85	9568	108	2939	17	3064	3.08	3.12
39	/uwo/seg3d/bone/bone.n6c100	3D/6C	7799k	8-bit	678	5683	132	6493	182	772	26	980	7.36	6.63
40	/uwo/seg3d/adhead/adhead.n6c100	3D/6C	12583k	8-bit	1092	23484	218	24794	280	7251	44	7575	3.24	3.27
41	/uwo/seg3d/bone/bone_subxyz_subxy.n26c10	3D/26C	246k	8-bit	76	347	12	435	37	84	1	122	4.14	3.57
42	/uwo/seg3d/bone/bone_subxyz_subx.n26c10	3D/26C	492k	8-bit	167	706	24	897	76	161	3	240	4.38	3.74
43	/uwo/seg3d/bone/bone_subxyz.n26c10	3D/26C	983k	8-bit	338	1873	50	2261	153	468	5	626	4.01	3.61
44	/uwo/seg3d/bone/bone_subxy.n26c10	3D/26C	1950k	8-bit	836	3735	101	4672	569	1078	10	1657	3.46	2.82
45	/uwo/seg3d/bone/bone_subxyz_subxy.n26c100	3D/26C	246k	8-bit	93	389	13	494	37	108	1	146	3.61	3.39
46	/uwo/seg3d/bone/bone_subxyz_subx.n26c100	3D/26C	492k	8-bit	161	754	26	941	78	218	3	299	3.45	3.15
47	/uwo/seg3d/bone/bone_subxyz.n26c100	3D/26C	983k	8-bit	332	2424	50	2807	150	825	5	980	2.94	2.86
48	/uwo/seg3d/bone/bone_subxy.n26c100	3D/26C	1950k	8-bit	829	4617	102	5548	555	1785	10	2349	2.59	2.36

OBK vs BK (Xeon, 32-bit)				BK				OBK						
				time init	time maxflow	time output	time total	time init	time maxflow	time output	time total	speedup maxflow	speedup total	
	instance	topo	# nodes	captype										
1	/mid/denoise/penguin	2D/4C	22k	16-bit	302	783	38	1123	152	737	15	904	1.06	1.24
2	/mid/denoise/house	2D/4C	66k	32-bit	1238	3364	163	4766	563	2242	43	2848	1.50	1.67
3	/mid/stereo/tsukuba	2D/4C	111k	8-bit	110	535	16	661	56	367	4	428	1.46	1.54
4	/uwo/stereo/BVZ-tsukuba	2D/4C	111k	8-bit	116	401	16	534	54	195	5	254	2.06	2.10
5	/uwo/stereo/BVZ-sawtooth	2D/4C	165k	8-bit	225	764	35	1024	120	442	8	570	1.73	1.80
6	/uwo/stereo/BVZ-venus	2D/4C	166k	8-bit	244	1235	39	1518	134	788	9	931	1.57	1.63
7	/mid/stereo/venus	2D/4C	166k	16-bit	228	1587	41	1856	125	1283	8	1416	1.24	1.31
8	/mid/stereo/teddy	2D/4C	169k	8-bit	669	3420	108	4197	340	2055	26	2421	1.66	1.73
9	/mid/segment/flower	2D/4C	270k	16-bit	48	44	8	100	22	19	2	43	2.30	2.35
10	/mid/segment/person	2D/4C	270k	16-bit	46	41	8	95	21	19	2	42	2.19	2.29
11	/mid/segment/sponge	2D/4C	307k	16-bit	53	37	9	99	25	11	2	38	3.44	2.58
12	/mid/photomontage/family	2D/4C	426k	32-bit	610	4368	100	5078	362	2327	22	2711	1.88	1.87
13	/mid/photomontage/panorama	2D/4C	514k	32-bit	845	2520	139	3503	572	1331	29	1932	1.89	1.81
14	/ctu/lazybrush/footman	2D/4C	593k	16-bit	93	244	17	354	68	107	9	183	2.28	1.93
15	/ctu/lazybrush/hmdman	2D/4C	593k	16-bit	98	345	17	459	58	123	8	188	2.80	2.44
16	/ctu/lazybrush/mangadinner	2D/4C	593k	16-bit	208	587	39	833	113	266	16	394	2.21	2.11
17	/ctu/lazybrush/mangagirl	2D/4C	593k	16-bit	88	418	19	525	64	186	8	258	2.25	2.04
18	/ctu/lazybrush/elephant	2D/4C	2370k	16-bit	253	3101	44	3397	112	1175	16	1303	2.64	2.61
19	/ctu/lazybrush/bird	2D/4C	2372k	16-bit	253	3623	44	3920	112	1030	16	1157	3.52	3.39
20	/ctu/lazybrush/doctor	2D/4C	2373k	16-bit	285	1648	52	1985	153	645	22	820	2.56	2.42
21	/uwo/shapefit/LB07-bunny-sml	3D/6C	806k	8-bit	74	226	9	309	38	61	3	102	3.72	3.03
22	/uwo/shapefit/LB07-bunny-med	3D/6C	6311k	8-bit	613	1999	71	2684	259	435	24	718	4.60	3.74
23	/uwo/seg3d/bone/bone_subxyz_subxy.n6c10	3D/6C	246k	8-bit	25	109	3	136	9	23	1	32	4.81	4.20
24	/uwo/seg3d/bone/bone_subxyz_subx.n6c10	3D/6C	492k	8-bit	50	293	6	349	20	48	2	70	6.10	5.00
25	/uwo/seg3d/bone/bone_subxyz.n6c10	3D/6C	983k	8-bit	98	771	12	882	37	134	4	175	5.77	5.05
26	/uwo/seg3d/bone/bone_subxy.n6c10	3D/6C	1950k	8-bit	188	1511	25	1724	74	317	8	398	4.77	4.33
27	/uwo/seg3d/bone/bone_subx.n6c10	3D/6C	3899k	8-bit	378	3586	45	4009	141	895	15	1051	4.01	3.82
28	/uwo/seg3d/liver/liver.n6c10	3D/6C	4162k	8-bit	391	5839	58	6288	172	2101	16	2289	2.78	2.75
29	/uwo/seg3d/babyface/babyface.n6c10	3D/6C	5063k	8-bit	519	5820	59	6398	178	1825	19	2021	3.19	3.17
30	/uwo/seg3d/bone/bone.n6c10	3D/6C	7799k	8-bit	795	5816	97	6707	307	782	30	1119	7.44	6.00
31	/uwo/seg3d/adhead/adhead.n6c10	3D/6C	12583k	8-bit	1354	14721	161	16236	442	4449	47	4938	3.31	3.29
32	/uwo/seg3d/bone/bone_subxyz_subxy.n6c100	3D/6C	246k	8-bit	45	284	6	335	19	68	2	89	4.19	3.78
33	/uwo/seg3d/bone/bone_subxyz_subx.n6c100	3D/6C	492k	8-bit	45	284	6	334	19	68	2	88	4.19	3.78
34	/uwo/seg3d/bone/bone_subxyz.n6c100	3D/6C	983k	8-bit	91	804	11	906	36	242	4	282	3.32	3.21
35	/uwo/seg3d/bone/bone_subxy.n6c100	3D/6C	1950k	8-bit	179	1836	22	2037	69	649	7	725	2.83	2.81
36	/uwo/seg3d/bone/bone_subx.n6c100	3D/6C	3899k	8-bit	365	4863	44	5272	138	1937	15	2090	2.51	2.52
37	/uwo/seg3d/liver/liver.n6c100	3D/6C	4162k	8-bit	378	9913	46	10336	156	4741	16	4913	2.09	2.10
38	/uwo/seg3d/babyface/babyface.n6c100	3D/6C	5063k	8-bit	468	8715	56	9239	164	3679	19	3862	2.37	2.39
39	/uwo/seg3d/bone/bone.n6c100	3D/6C	7799k	8-bit	741	6218	87	7046	272	1197	29	1498	5.20	4.70
40	/uwo/seg3d/adhead/adhead.n6c100	3D/6C	12583k	8-bit	1197	25483	140	26821	434	9320	47	9800	2.73	2.74
41	/uwo/seg3d/bone/bone_subxyz_subxy.n26c10	3D/26C	246k	8-bit	80	346	3	429	49	99	1	149	3.49	2.88
42	/uwo/seg3d/bone/bone_subxyz_subx.n26c10	3D/26C	492k	8-bit	163	694	6	863	101	191	2	294	3.64	2.94
43	/uwo/seg3d/bone/bone_subxyz.n26c10	3D/26C	983k	8-bit	408	1877	13	2297	220	543	4	767	3.46	3.00
44	/uwo/seg3d/bone/bone_subxy.n26c10	3D/26C	1950k	8-bit	836	3946	29	4810	510	1284	8	1802	3.07	2.67
45	/uwo/seg3d/bone/bone_subxyz_subxy.n26c100	3D/26C	246k	8-bit	86	404	4	494	51	131	1	183	3.09	2.71
46	/uwo/seg3d/bone/bone_subxyz_subx.n26c100	3D/26C	492k	8-bit	187	780	7	974	105	266	2	373	2.94	2.61
47	/uwo/seg3d/bone/bone_subxyz.n26c100	3D/26C	983k	8-bit	450	2497	14	2961	229	973	4	1207	2.57	2.45
48	/uwo/seg3d/bone/bone_subxy.n26c100	3D/26C	1950k	8-bit	882	4571	25	5479	478	2051	8	2537	2.23	2.16

OBK vs BK (Xeon, 64-bit)				BK				OBK						
				time init	time maxflow	time output	time total	time init	time maxflow	time output	time total	speedup maxflow	speedup total	
	instance	topo	# nodes	captype										
1	/mid/denoise/penguin	2D/4C	22k	16-bit	185	841	14	1041	107	557	12	676	1.51	1.54
2	/mid/denoise/house	2D/4C	66k	32-bit	1603	5161	170	6935	711	1883	36	2630	2.74	2.64
3	/mid/stereo/tsukuba	2D/4C	111k	8-bit	156	750	22	928	46	312	4	362	2.40	2.57
4	/uwo/stereo/BVZ-tsukuba	2D/4C	111k	8-bit	161	648	23	831	44	170	4	218	3.82	3.82
5	/uwo/stereo/BVZ-sawtooth	2D/4C	165k	8-bit	297	1086	49	1431	94	370	7	471	2.93	3.04
6	/uwo/stereo/BVZ-venus	2D/4C	166k	8-bit	337	2008	55	2400	104	669	8	781	3.00	3.07
7	/mid/stereo/venus	2D/4C	166k	16-bit	304	2518	50	2872	117	995	7	1119	2.53	2.57
8	/mid/stereo/teddy	2D/4C	169k	8-bit	921	4758	151	5829	223	1748	22	1993	2.72	2.92
9	/mid/segment/flower	2D/4C	270k	16-bit	57	85	10	152	18	9	2	29	8.95	5.29
10	/mid/segment/person	2D/4C	270k	16-bit	62	97	11	169	18	10	2	29	10.09	5.86
11	/mid/segment/sponge	2D/4C	307k	16-bit	66	82	12	160	20	3	2	25	26.10	6.30
12	/mid/photomontage/family	2D/4C	426k	32-bit	717	6281	135	7133	244	1990	19	2253	3.16	3.17
13	/mid/photomontage/panorama	2D/4C	514k	32-bit	1003	3680	187	4870	434	1121	25	1580	3.28	3.08
14	/ctu/lazybrush/footman	2D/4C	593k	16-bit	90	366	19	474	25	68	6	99	5.38	4.77
15	/ctu/lazybrush/hmdman	2D/4C	593k	16-bit	98	557	18	673	25	82	5	113	6.78	5.96
16	/ctu/lazybrush/mangadinner	2D/4C	593k	16-bit	233	888	45	1166	55	182	10	247	4.87	4.72
17	/ctu/lazybrush/mangagirl	2D/4C	593k	16-bit	94	606	17	717	23	129	6	158	4.68	4.54
18	/ctu/lazybrush/elephant	2D/4C	2370k	16-bit	335	4136	58	4529	94	955	12	1061	4.33	4.27
19	/ctu/lazybrush/bird	2D/4C	2372k	16-bit	343	4846	61	5251	94	836	12	942	5.80	5.58
20	/ctu/lazybrush/doctor	2D/4C	2373k	16-bit	372	2459	66	2898	124	524	18	666	4.70	4.35
21	/uwo/shapefit/LB07-bunny-sml	3D/6C	806k	8-bit	118	340	15	472	35	47	3	84	7.28	5.60
22	/uwo/shapefit/LB07-bunny-med	3D/6C	6311k	8-bit	958	2960	102	4020	232	363	21	616	8.14	6.53
23	/uwo/seg3d/bone/bone_subxyz_subxy.n6c10	3D/6C	246k	8-bit	35	170	5	210	10	19	1	30	8.85	7.03
24	/uwo/seg3d/bone/bone_subxyz_subx.n6c10	3D/6C	492k	8-bit	70	389	10	468	18	39	1	59	9.86	7.94
25	/uwo/seg3d/bone/bone_subxyz.n6c10	3D/6C	983k	8-bit	157	1054	18	1229	33	120	3	157	8.78	7.84
26	/uwo/seg3d/bone/bone_subxy.n6c10	3D/6C	1950k	8-bit	306	2079	36	2421	65	279	7	351	7.44	6.90
27	/uwo/seg3d/bone/bone_subx.n6c10	3D/6C	3899k	8-bit	626	4720	63	5409	127	809	13	949	5.84	5.70
28	/uwo/seg3d/liver/liver.n6c10	3D/6C	4162k	8-bit	656	7813	68	8537	149	1915	14	2078	4.08	4.11
29	/uwo/seg3d/babyface/babyface.n6c10	3D/6C	5063k	8-bit	800	7775	91	8666	146	1648	17	1812	4.72	4.78
30	/uwo/seg3d/bone/bone.n6c10	3D/6C	7799k	8-bit	1233	7596	137	8965	254	674	26	954	11.28	9.40
31	/uwo/seg3d/adhead/adhead.n6c10	3D/6C	12583k	8-bit	1955	18490	216	20661	386	4073	41	4499	4.54	4.59
32	/uwo/seg3d/bone/bone_subxyz_subxy.n6c100	3D/6C	246k	8-bit	67	381	8	456	16	59	1	77	6.44	5.94
33	/uwo/seg3d/bone/bone_subxyz_subx.n6c100	3D/6C	492k	8-bit	58	381	8	447	19	58	1	78	6.52	5.70
34	/uwo/seg3d/bone/bone_subxyz.n6c100	3D/6C	983k	8-bit	136	1070	15	1221	31	222	3	256	4.83	4.77
35	/uwo/seg3d/bone/bone_subxy.n6c100	3D/6C	1950k	8-bit	269	2407	30	2707	60	581	6	648	4.14	4.18
36	/uwo/seg3d/bone/bone_subx.n6c100	3D/6C	3899k	8-bit	549	6301	61	6910	120	1794	13	1927	3.51	3.59
37	/uwo/seg3d/liver/liver.n6c100	3D/6C	4162k	8-bit	574	12667	65	13305	137	4445	13	4596	2.85	2.90
38	/uwo/seg3d/babyface/babyface.n6c100	3D/6C	5063k	8-bit	701	11000	79	11780	142	3469	16	3627	3.17	3.25
39	/uwo/seg3d/bone/bone.n6c100	3D/6C	7799k	8-bit	1124	8109	121	9354	241	1056	25	1323	7.68	7.07
40	/uwo/seg3d/adhead/adhead.n6c100	3D/6C	12583k	8-bit	1778	30975	196	32948	378	8719	41	9138	3.55	3.61
41	/uwo/seg3d/bone/bone_subxyz_subxy.n26c10	3D/26C	246k	8-bit	122	462	5	588	47	98	1	146	4.71	4.02
42	/uwo/seg3d/bone/bone_subxyz_subx.n26c10	3D/26C	492k	8-bit	243	912	9	1164	97	189	2	287	4.84	4.06
43	/uwo/seg3d/bone/bone_subxyz.n26c10	3D/26C	983k	8-bit	498	2443	19	2959	190	536	3	730	4.56	4.06
44	/uwo/seg3d/bone/bone_subxy.n26c10	3D/26C	1950k	8-bit	994	4873	38	5904	499	1235	6	1740	3.95	3.39
45	/uwo/seg3d/bone/bone_subxyz_subxy.n26c100	3D/26C	246k	8-bit	122	509	5	636	47	129	1	177	3.96	3.60
46	/uwo/seg3d/bone/bone_subxyz_subx.n26c100	3D/26C	492k	8-bit	243	965	9	1217	97	260	2	358	3.71	3.40
47	/uwo/seg3d/bone/bone_subxyz.n26c100	3D/26C	983k	8-bit	499	3038	19	3556	190	948	3	1141	3.21	3.12
48	/uwo/seg3d/bone/bone_subxy.n26c100	3D/26C	1950k	8-bit	994	5794	38	6826	498	2047	7	2551	2.83	2.68